

INDUSTRIAL PRODUCT
CRAFTMANSHIP QUALITY

Thermiroll

*Leader in the production, sales and service of
high technological industrial doors*



SPIRAL ISO 50
SPIRAL 80 SPECIAL
SPIRAL 80 COLD ROOM
AIR FLOW
SPIRAL 50 SMART
EOLO
CLASSIC
KOMBY
SPIRAL ISO 50
SPIRAL 80 SPECIAL
SPIRAL 80 COLD ROOM
AIR FLOW
SPIRAL 50 SMART
EOLO
CLASSIC
KOMBY
SPIRAL ISO 50
SPIRAL 80 SPECIAL

INDEX

<i>Thermicroll®</i>	1
<i>The vision</i>	2
<i>Production</i>	3
<i>Strengths</i>	4
<i>Patents</i>	5
<i>Sectors of application</i>	6
<i>Thermicroll® range</i>	8
<i>spiral ISO 50</i>	10
<i>spiral 80 special</i>	12
<i>spiral 80 cold room</i>	13
<i>air flow</i>	14
<i>spiral 50 smart</i>	15
<i>eolo</i>	16
<i>classic</i>	17
<i>komby</i>	18

75.000

installed industrial doors



QUALITY

We work on continuous improvement to increase characteristics of our products and always reach the very highest level



RELIABILITY

The know how to technically perfect products whose manufacturing characteristics allow us to reduce maintenance interventions



INNOVATION

Continuous growth of our knowledge and skills are fundamental to operate ahead of time for the current and future needs

YEARS OF ACTIVITY

more than 300
distributors

Thermicroll® is a solid company specialized in production, sales and service of industrial doors, roller shutters, speed doors, commercial doors, insulated doors and industrial dampers. High knowledge in mechanics, added to technological automation, allow the company to create innovative solutions to separate different working areas and environments. Technical knowledge and strong experience in the field of industrial doors that facilitate the handling of goods,

materials and people safely make Thermicroll® a leader in its field. Safety, security, quality and versatility are just some features and advantages that distinguish our products and our way of working. Thanks to a highly consultative approach, and our technical network, we take care of our customers by offering technical assistance, support in the selection, installation and maintenance and solve any problem that may arise with a Thermicroll® creation.

ON THE SIDE OF YOUR BUSINESS TO OPTIMIZE, OPERATE AND INNOVATE.



Design and quality of work require standards higher year after year. Future operations, energy costs and also the movement of goods, materials and people are all a cost: these parameters affect the running cost of the whole production plant. Thermicroll® helps to make its mark in the market, the first for searching solutions increasingly advantageous and efficient. Its objective is to assist companies in a way towards the adoption of systems of more advanced industrial doors which are user friendly, and will be able to play their part in reducing production times and costs for companies compared to traditional production processes, we are constantly investing in research and innovation.

PRODUCTION

TO A HIGH STANDARD

Thermicroll® designs, produces and install door systems for small, medium and large companies like airports, naval ports, retail, industries, washes, hospitals and barracks, taking care of the whole process through its offer “turnkey”.



The production is “Made in Italy”, **Thermicroll®** designs and manufactures its own products testing them directly and controlling the entire production process. In this way, it is certain to ensure high system quality standards and total reliability. The advantage is obvious: one specialized partner, responsible for research, selection, design, and construction of the products, ensures the production chain. In **Thermicroll®**, attention to detail is present in each business.

Function and culminates in the testing phases and quality control, first done in the company and then, at the installation place (site). Thanks to a highly consultative approach and a reliable network of technicians on the national territory, **Thermicroll®** helps companies to solve most separation and demarcation zone needs, whether it concerns logistics loading and unloading materials, whether it be a warehouse.



1

VERY SMALL DIMENSIONS

of the shutter thanks to the particular design of the door heading



2

NO SPRINGS



3

LOW NOISE
during opening and closing



4

HIGH HEAT RESISTANCE



5

HIGH WIND RESISTANCE



6

NO FIXINGS
to the ceiling, unlike conventional sectional doors

Strengths

Your project is also our challenge. Thermicroll®, is developed thanks to the experience and different realities in which we install our products, this enables us to find the ideal solution for your needs and offer you the best in the market.

7

SIMPLICITY
structural design

8

LIMITED MAINTENANCE
(only one provided by the rules)

9

SPEED
of assembly

10

PACKED AND CRATED
With use of polystyrene protection

11

DESIGNED WITHIN THE TECHNICAL RULES
Provided by the relevant law

12

CERTIFIED GUARANTEE



PATENTS

We are inflexible about the quality and safety of our products, each Thermicroll product is certified as exclusive, original, unique and incomparable. Products are built according to current law under the European standards.



SECTORS OF APPLICATION

Airport and naval ports

Thermicroll® door solutions are adapted for airport hangars and naval stores, which must be in continuous service in order to preserve means to the atmospheric agents and weather conditions, often adverse. At the same time, **Thermicroll®** door solutions meet operational needs, and guarantee the possibility to operate inside the structure and near to the door, without any limit and the greatest noise reduction.

Environmental and composting sector

The **Thermicroll®** doors meet the requirements of thermal barrier, the passage of the fumes and the access facilitation to storage areas easily accessible by large excavators and buckets, which require large openings for the passage of heavy vehicles and of substantial loads: situations found where there is a composting site or engaged in activities relating to the management of organic materials in the process of decomposition.

Car washes

To divide the wash and vacuum environments (and preserve them from possible splashes of water), to control the temperature and to prevent vandalism, locking systems play a fundamental role. **Thermicroll®** offers specific products for this type of environments and for all the industrial sectors in direct contact with the water.

Large Retail Trade

Hygiene, temperature between different environments, noise pollution and safety are the main needs of the industry, which **Thermicroll®** will respond with a specific design. Specifically, the rapid door dedicated to the food sector, combines safety,

functionality, and aesthetics, ensuring the safety of non-qualified personnel (customers) in areas near to the cargo passage.

Industry

The industry, particularly the heavy engineering industry, tends to break down the obstacles that block the transition between environments, to accelerate the process and to avoid accidents at work: one of these, for example, are the big, heavy industrial folding door, which are opened several times a day with considerable loss of time. **Thermicroll®** offers solutions without ground attacks, for the fast and safe passage from one zone to another..

Logistics

Thermicroll® has developed a specific range of closures characterized by maximum speed, robustness and isolation, for this type of industry, with particular attention to airport runways, naval exercise areas, logistics yards and warehouses, especially during loading and unloading areas. Safety is another of the basic requirements that our doors must fulfill, due to the presence of internal and external employees, goods sometimes very delicate and highly sophisticated means.

Refrigeration

The cold storage and refrigeration areas, important in the food industry and in the medical and biological, require an easy transition between different temperature zones and humidity. Besides having controlled temperature and humidity, you must also ensure the same environmental safety. **Thermicroll®** provides two special closures insulated blinds, which are in an ideal solutions in this area.



AIRPORT AND NAVAL PORTS
ENVIRONMENTAL AND COMPOSTING SECTOR
CAR WASHES / LARGE RETAIL TRADE

INDUSTRY |

REFRIGERATION

LOGISTICS





The best performance in terms of speed, safety, and insulation, with very attractive aesthetics.

The future of industrial doors, with Thermicroll® has already arrived.



Thermicroll® range

Thermicroll® has developed a wide range of highly versatile industrial doors specifically designed to solve the most common problems found within companies, large distribution and large sites linked to transport or disposal. Let's talk about needs such as easy access and passage to various environments, energy savings, maintaining the temperature, safety. The **Thermicroll®** systems, developed in line with rules, they are all designed especially for high frequency of use, ensuring maximum reliability even when subjected to high usage. The spiral winding systems are the basis of **Thermicroll®** production, because they are the element that makes possible the peculiarity of the product: the speed. A fast system decreases the maximum waiting times for the

movement of goods and subjective, strongly reduces the cold dissipation in refrigerated areas and keeps the heat inside of these spaces in which the personnel are working, ensuring a real saving of valuable resources, economic, first of all. When the temperature also remains constant, even the environment is protected, thanks to the drastic reduction of the CO₂ in the air. The quality of **Thermicroll®** products is very high. We choose in fact, to offer a product made with the best materials and the best technology, that, once installed, it will be practically maintenance-free, as the risks of malfunctioning or breakage are virtually non-existent. The low operating costs make the industrial doors **Thermicroll®** an investment that can be quickly recouped.

REQUIREMENT,

THOUSAND SOLUTIONS

Thermicroll® products include the design for the industrial site, giving it character and added value: it isn't a simple industrial door, but a large range of highly customized products, where functionality and design coexist harmoniously.



Thermicroll® industrial doors are highly customizable. Look to the technical documentation to discover all combinations of finishes and the wide range of colors at your disposal!



PRODUCTS

SPIRAL ISO 50

Spiral door with panel 50 mm

SPIRAL 80 SPECIAL APPLICATION

Spiral insulated door for special utilization

SPIRAL 80 COLD ROOM

vertical scrolling for refrigeration trade

AIR FLOW

Spiral door with steel micro perforated panel

SPIRAL 50 SMART

Spiral door ideal for cargo points

EOLO

Curtain reinforced with an aluminium profile

CLASSIC

Insulated curtain with a reinforced profile

KOMBY

twin curtains: Classic + Speed roll in PVC



Spiral Iso 50

The top of the range between insulated doors Thermicroll® provides the best performance in terms of speed, security and isolation, combined with an attractive aesthetic look; it is suitable for both inside and outside applications.

The winding patented circular spiral is made of high density polyethylene and the curtain is composed of aluminum panels or double wall steel with high thermal-acoustic insulation and the possibility of insertion of polycarbonate windows. The winding space is very low. It does not require anchoring to the ceiling.



FEATURES & BENEFIT

- › 3 Ph motor with inverter drive controls
- › Up to 1,8 m/s opening speed
- › User friendly with minimal maintenance
- › Resistive wireless safety edge (optional)
- › Light grid
- › High thermal performance 1,8 W/m2K
- › Simple opening if power fails
- › No springs

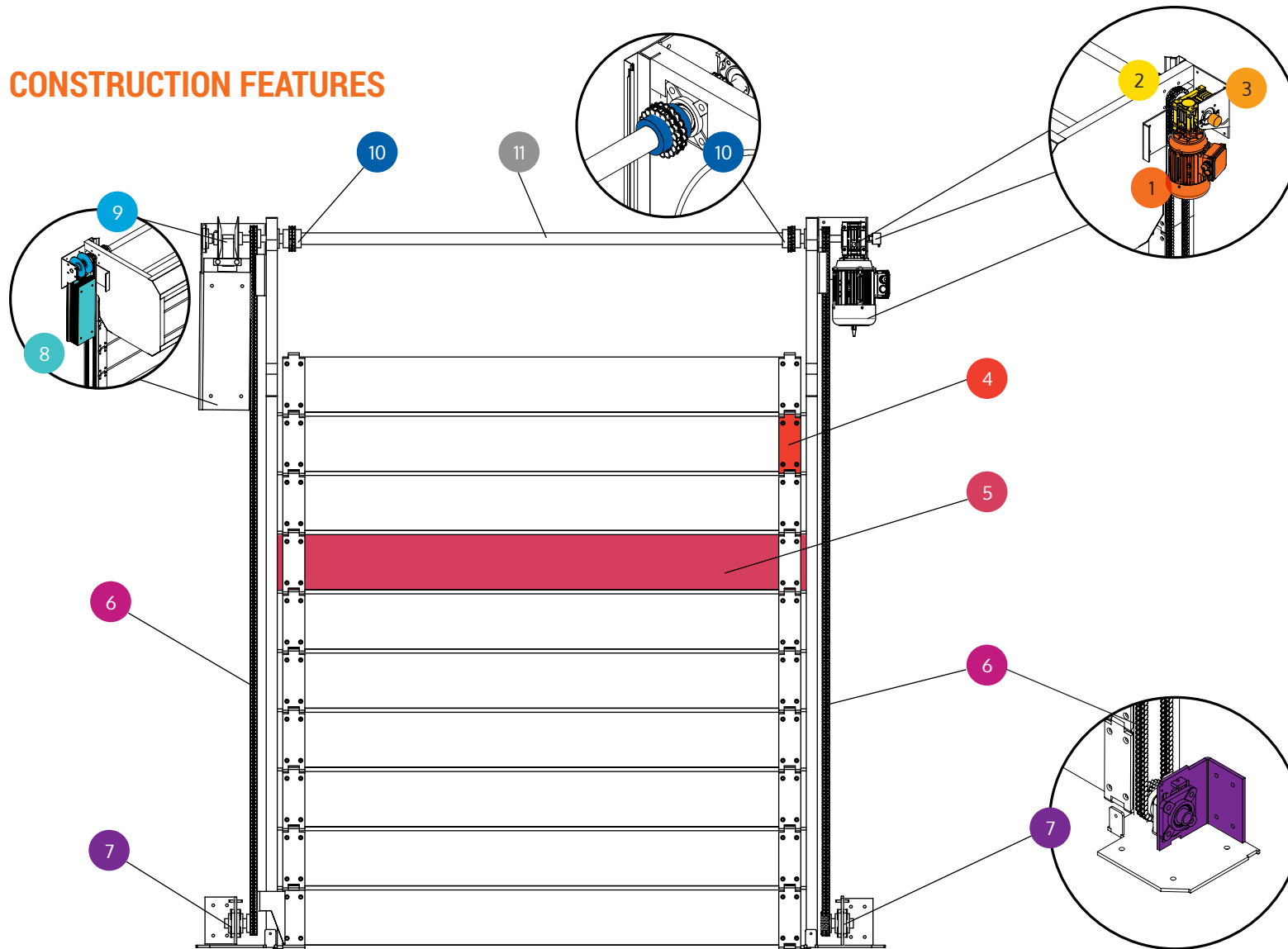


IDEAL FOR: GDO, industry, logistic

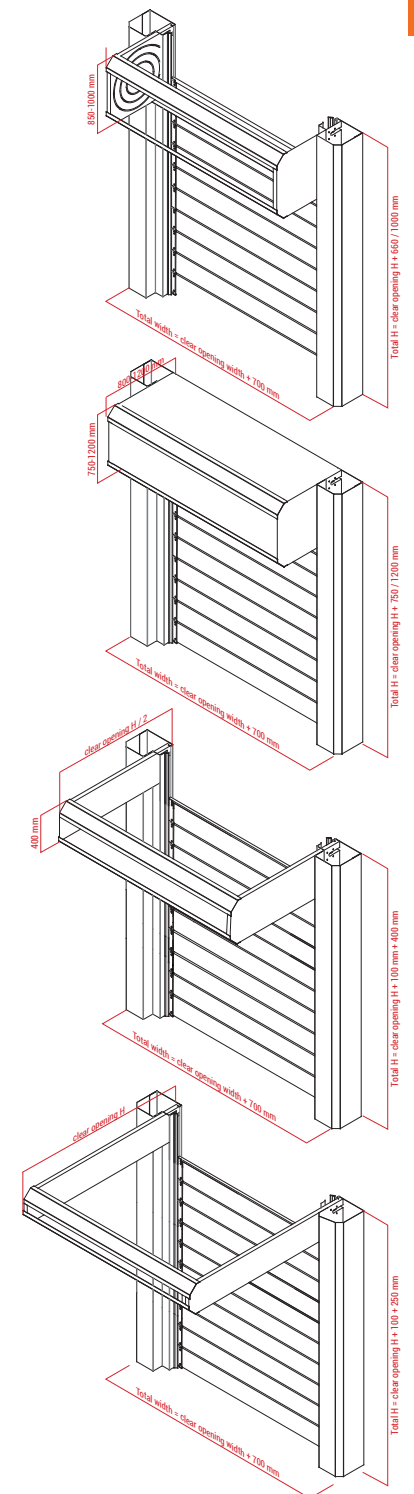


All product specifications and the different finishes in the technical sheet

CONSTRUCTION FEATURES



- | | | | |
|------------------------|----------------------|-------------------------|---------------------------------|
| 1 SELF - BRAKING MOTOR | 4 PANEL FIXING PLATE | 7 BEARING SUPPORT PLATE | 10 DRIVE SHAFT CONNECTION JOINT |
| 2 GEARBOX | 5 PANEL | 8 COUNTERWEIGHT | 11 MECHANICAL AXIS |
| 3 OPTIC ENCODER | 6 TRANSMISSION CHAIN | 9 PULLEY | |

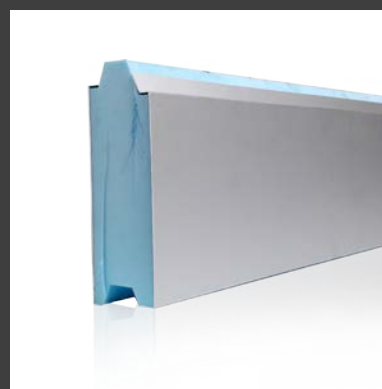


Spiral 80

SPECIAL APPLICATIONS

Roller door developed with the specific characteristic of maintaining a high insulation. It ensures good acoustic insulation. Suitable for special applications.

The winding patented circular spiral is made of high density polyethylene and the curtain is composed of aluminum panels or double wall steel with high thermal-acoustic insulation. The winding space is very low. It does not require anchoring to the ceiling.



FEATURES & BENEFIT

- › 3 Ph motor with inverter drive controls
- › Up to 2 m/s opening speed
- › Minimal maintenance
- › Photocell barriers
- › K thermic: 0.7 W/m2K
- › Manual chain release
- › No springs



IDEAL FOR: *industry, logistic, GDO*



All product specifications and the different finishes in the technical sheet

Spiral 80 COLD ROOM

Insulated door developed with specific resistance at low temperatures : cooling and refrigeration doors are ensured down to -25°C and is perfect for food and refrigeration sectors.

Patented vertical scrolling is made of high density polyethylene and the curtain is composed of aluminum panels or double wall steel with high thermal-acoustic insulation. The winding space is very low. It does not require anchoring to the ceiling.

FEATURES & BENEFIT

- › 3 Ph motor with inverter drive controls
- › Up to 2 m/s opening speed
- › Minimal maintenance
- › Photocell barriers
- › K thermic: 0.7 W/m2K
- › Manual chain release
- › No springs



IDEAL FOR: industry, logistic, GDO



All product specifications and the different finishes in the technical sheet



Air Flow

Winding industrial door with air permeability, meets the needs of separation and security, enabling easy exchange of air between inside and outside also when the door is closed, thanks to micro perforated panels.

Thermicroll® Air Flow is constructed by a structure without fixings to the ceiling, thus providing the possibility of application also in areas where the ceiling of the building is not load bearing. The winding patented circular spiral is made of high density polyethylene and the curtain is composed of steel panels micro perforated and anti burglary. The winding space is very small and is absent the footprint on the ground when the door is open.

FEATURES & BENEFIT

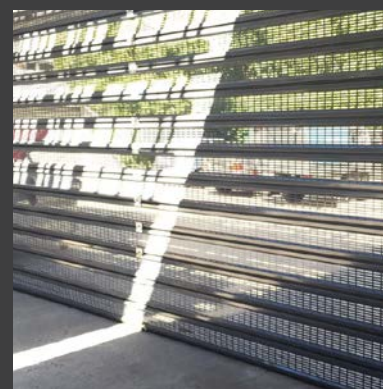
- › 3 Ph motor with inverter drive controls
- › Up to 1,8 m/s opening speed
- › User friendly with minimal maintenance
- › Light grid
- › Anti burglary
- › Simple opening if power fails
- › No springs



IDEAL FOR: *garage, security*



All product specifications and the different finishes in the technical sheet



Spiral 50^{SMART}

Top range door between insulated doors. provides the best performance in terms of safety, insulation and limited maintenance, combined with an attractive aesthetic look; it is suitable for both inside and outside applications. Ideal for loading bay.

The winding patented circular spiral is made of high density polyethylene and the curtain is composed of aluminum panels or double wall steel with high thermal-acoustic insulation and possibility to include polycarbonate windows. The winding space is very low. It does not require anchoring to the ceiling.

FEATURES & BENEFIT

- › 3 Ph motor with inverter drive controls
- › Up to 0,5 m/s opening speed
- › Minimal maintenance
- › Man present closure
- › Automatic opening
- › Thermal insulation 1,5 W/m2K
- › Manual chain opening
- › No springs



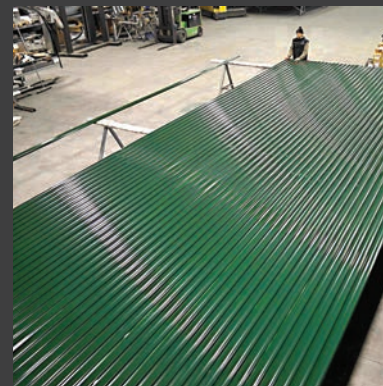
IDEAL FOR: *industry, logistic, GDO*



All product specifications and the different finishes in the technical sheet



Eolo



Winding industrial door Thermicroll® whose fundamental feature is the incomparable wind resistance. It is perfect in situations where air movements are very significant, like whether events or flows generated by man. It is designed for any type of industry which has large compartments.

Eolo is able to do what the traditional roller shutter cannot, now covering areas up to 13x8 meters. The robust aluminum surface is wrapped by a tube direct driven, that requires no spring balancing system, minimizing routine maintenance.

FEATURES & BENEFIT

- › 3 Ph motor
- › Up to 0,2 m/s opening speed
- › User friendly with minimal maintenance
- › Resistive wireless safety edge (optional)
- › Light grid (optional)
- › Simple opening if power fails
- › Wind load class 4
- › No springs



IDEAL FOR: airport and naval ports, industry



All product specifications and the different finishes in the technical sheet

Classic

The Thermicroll® Classic is suitable for a wide range of industrial environments where we need a simple, inexpensive compact door. It is a product with a non-priced and of excellent quality and low maintenance.

The insulated curtain, composed of aluminum panels or double-walled steel, is wound on a roller in contact with the motor. Possibility of insertion of polycarbonate windows to maximize the interior lighting. The winding space is very small, requires no spring balancing system, the footprint on the ground when the door is open is absent.

FEATURES & BENEFIT

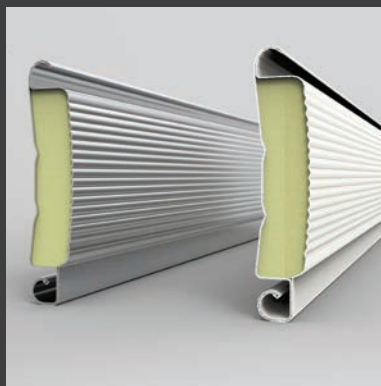
- › 3 Ph motor
- › Up to 0,2 m/s opening speed
- › User friendly with minimal maintenance
- › Resistive wireless safety edge (optional)
- › Light grid (optional)
- › Thermal performance 3,5 W/m2K
- › Simple opening if power fails
- › No springs



IDEAL FOR: *industry, logistic*



All product specifications and the different finishes in the technical sheet



Komby

Roller door and insulated Thermicroll® designed from the combination of Speed door in PVC and Classic door. In one door, you have the galvanized shutter for security and fabric curtain for daily use.

The steel frame of the insulated door ensures good security, and the fabric curtain provides fast opening speed. It's an ideal door solution to let the light in the plant, thanks to vision on the PVC curtain. Highly versatile, and also the fabric curtain can be printed with your logo or custom graphics.



FEATURES & BENEFIT

- › Up to 2.5 m/s opening speed
- › 3 Ph drive control panels
- › Wireless resistive safety edge
- › Self repairing curtain following impact
- › 1300 g/m2 curtain with 12 standard colours
- › Insulated galvanised lath
- › 2 rows of vision as standard
- › Frame and all covers are galvanised as standard
- › No springs



IDEAL FOR: *general use, industry*



All product specifications and the different finishes in the technical sheet



United States

Mexico

United Kingdom

Nederland

Scandinavia

Switzerland

Germany

France

Spain

Portugal

Italy

Poland

Israel

United Arab Emirates

Korea

Japan

Working with us?

WE ARE WAITING FOR YOU.



Thermicroll

Via Artigianale 5
12040 Vezza d'Alba (CN) - Italia
Tel. +39.0173.658242
info@thermicroll.com
P.I. 03389310040